

# MONTHLY MEMBERSHIP PROGRESS REPORT

LOCATION INDIA

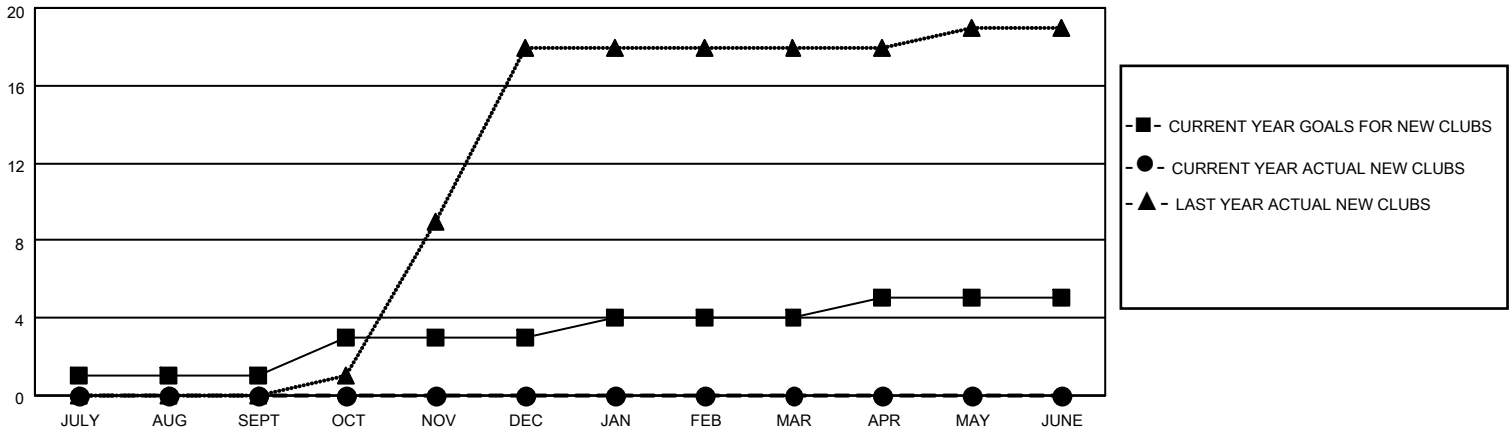
District 3231A1

Results as of: 2/28/2022

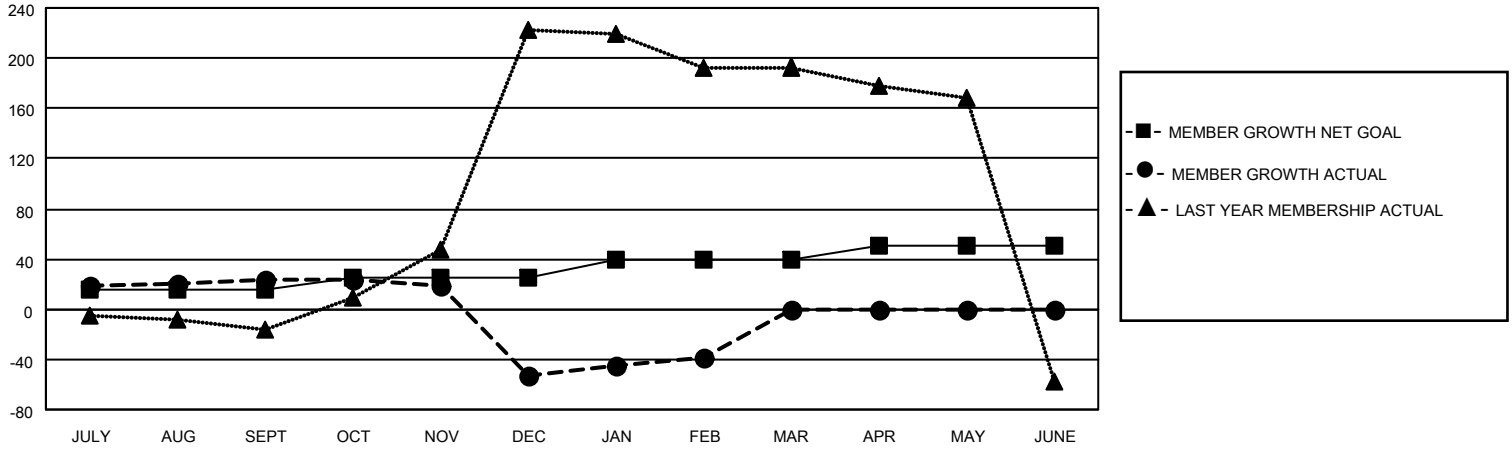
Clubs			
RESULTS FOR 2021-2022			
QUARTER	NEW CLUB GOAL	NEW CLUBS	DROPPED CLUBS
JULY/AUG/SEPT	1	0	0
OCT/NOV/DEC	2	0	1
JAN/FEB/MAR	1	0	0
APR/MAY/JUNE	1	0	0

Members			
RESULTS FOR 2021-2022			
QUARTER	MEMBER GROWTH NET GOAL	MEMBER GROWTH ACTUAL	DROPPED MEMBERS ACTUAL (including transfers)
JULY/AUG/SEPT	15	32	5
OCT/NOV/DEC	10	7	83
JAN/FEB/MAR	15	22	2
APR/MAY/JUNE	10	0	0

**GOALS AND ACTUAL NEW CLUBS CUMULATIVE**



**GOALS AND ACTUAL MEMBERS CUMULATIVE**



**DROPPED CLUBS: 1**

**13 CLUBS OF 70 ADDED 1 OR MORE NEW MEMBERS**

**GENDER DISTRIBUTION**

**DROPPED MEMBERS**

DECEASED	4
CLUB CANCELLED	3
OTHER	83
<b>TOTAL</b>	<b>90</b>

[CLICK HERE FOR CUMULATIVE MEMBERSHIP DATA](#)

MALE	932 (61.56%)
FEMALE	582 (38.44%)
NON BINARY	0 (0.00%)
PREFER NOT TO ANSWER	0 (0.00%)

TOTAL FAMILY UNIT MEMBERS 672

FAMILY MEMBERS PAYING HALF DUES 360